

AT YOUR SERVICE



Landstinget
i Värmland







Värmland

Värmland is the county of the Klarälven river, the forests and the blue lakes. Here is poet Gustaf Fröding's grove with the call of the cuckoo, and Märbacka, which Selma Lagerlöf loved so much. Here Picasso placed a unique sculpture on the shore of Lake Vänern and here are to be found areas where you find more elk than people.

There are 16 local authorities within the county of Värmland, with a total population of 273,000. The Karlstad area has a population of over 120,000. Here, Karlstad University, an international centre for forestry, is to be found and here telecommunications for the future are being developed.

There are many areas with thriving manufacturing industries in Värmland and thousands of tourists visit us every year. In the summers the attractions are fishing and cultural activities and in the winters we have our magnificent skiing facilities.



The County Council

The aim of Värmland County Council is:

- ✓ to promote good health
- ✓ to cure, alleviate and comfort
- ✓ to prevent ill-health and injury
- ✓ to contribute to regional development in Värmland

The vision we share is to create a dynamic and attractive county which promotes good health, where both the people of the county and our staff find our services to be of satisfactory quality while at the same time we ensure that the County Council maintains a balanced budget.

Värmland County Council is the largest employer in the county and has the most extensive organization in Värmland in terms of skills and know-how. There is about 7,700 qualified staff working here.



Health and medical care

The most extensive area of activity for the County Council is that of health and medical care. Here there are around 6,000 employees. In Värmland, there is a common organization for primary care and secondary care. Out-patient care consists of roughly 35 local health care centres within primary care, where very competent GPs and district nurses work, plus maternity and child health clinics, together with a number of specialist clinics. There are emergency hospitals in Arvika, Karlstad, and Torsby, and hospitals with no emergency care in Kristinehamn and Säffle.

The local primary health care centres are the first contact patients have with the health and medical care services. If some form of specialist treatment is required, the patients are directed to one of our hospitals or to a regional hospital outside of the county. Patients, and their close relatives, may telephone our advice centre for health and medical care. In case of an accident or acute illness, the ambulance service is quickly on the scene and medical treatment is immediately available inside the ambulance on the way to the hospital.

Among the staff working within the health and medical services there are 2,500 nurses, 1,300 assistant nurses, 650 doctors, and 500 medical secretaries.



County Council Services

County Council Services is responsible for property owned by the County Council, for maintenance and for the tendering for new buildings and restoration. Other staff of County Council Services are those who prepare good-quality and nutritious food for patients and staff, those responsible for keeping things clean and tidy, janitors, and those responsible for telephones and transports. County Council Services is continually developing and maintaining all personal computers and computer systems that belong to the County Council. County Council Services has 800 employees.





The Public Dental Service

The Public Dental Service forms part of Värmland County Council. There are 31 dental clinics throughout the county. In addition, there are nine specialist clinics and three hospital clinics. Children and adolescents, up to nineteen years of age, are provided with treatment free of charge within the Public Dental Service in the county. Many adults have reached a contractual agreement with the Public Dental Service and are thus provided with treatment according to a fixed price schedule.


The children in Värmland have the healthiest teeth in the whole of Sweden because of the successful preventative measures of our Public Dental Service.

The Public Dental Service in Värmland has about 530 employees.



Education

The County Council runs five adult education colleges with 250 employees. The main task is to, together with other actors, raise the educational level and even out differences between individuals and groups in Värmland. The adult education colleges have different profiles, for example, music, art, sports, and wild life protection. The colleges are located in Arvika, Kristinehamn, Molkom, Stöllet, and Årjäng. Each school offer extensive programs for summer courses.



Many individuals, meaningful efforts

Each year in Värmland County Council ...

... there are about **7 700** employees.

... about **39 000** patients are provided with care in hospitals.

... about **2 500** babies are born.

... about **30 000** calls are answered by ambulances.

... over **600 000** visits to our doctors.

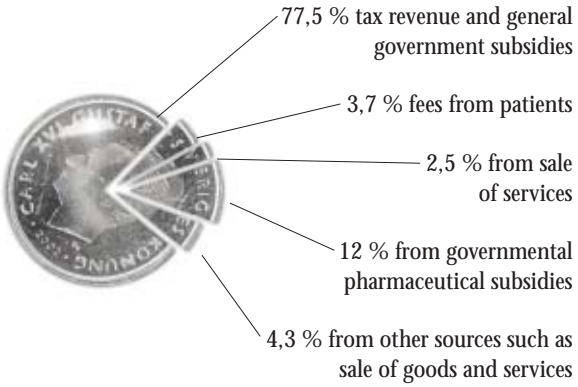
... about **125 000** children and adults are treated by the
Public Dental Service.





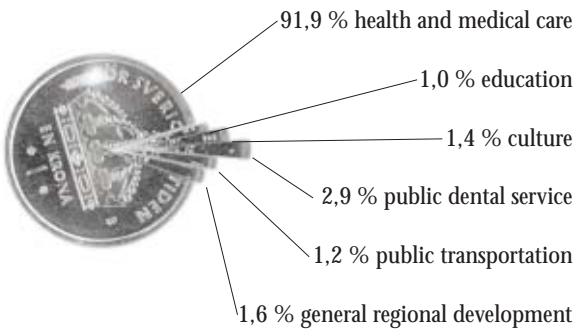
Where do the resources come from?

The County Council's sources of income consist of:

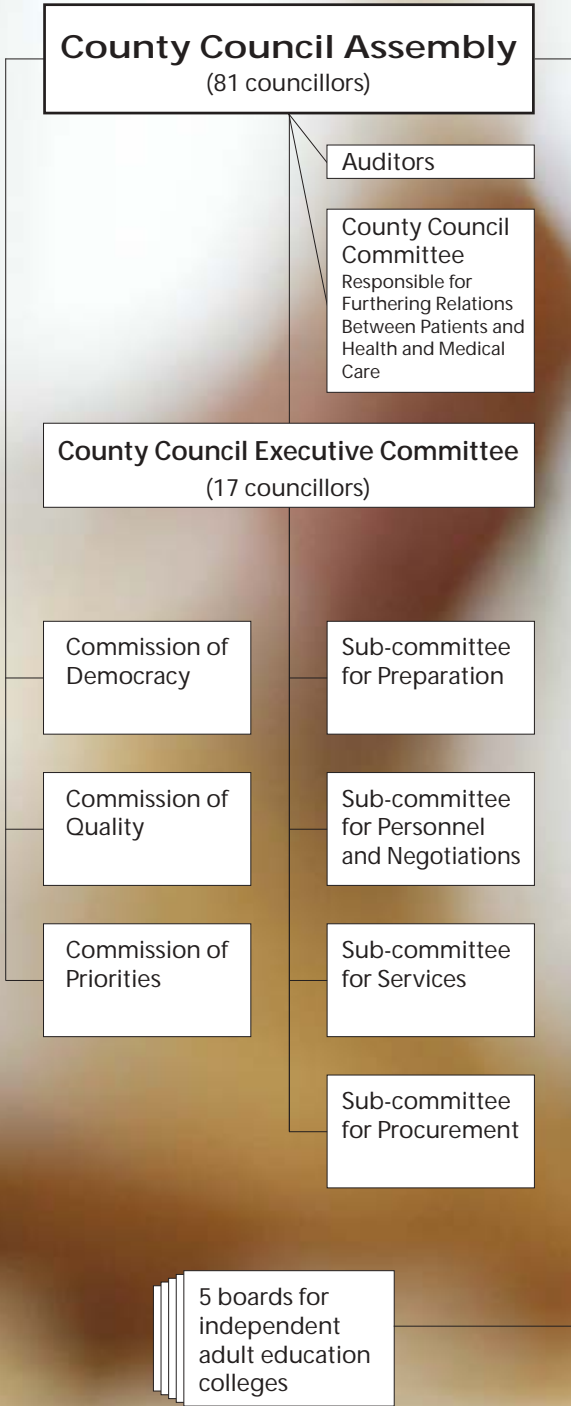


How are they used?

The net cost of the activities of the County Council is about 4,000 MSEK per annum. Värmland County Council's expenditures consist of:



Our political organization





You choose ...

The County Council is run by elected political councillors. Every fourth year you choose which political parties and which politicians you want to direct the work of the County Council.



... the politicians who run the County Council ...

The County Council is run by elected political councillors. The County Council Assembly, with its 81 county councillors, is the supreme decision-making body for the County Council. The County Council Assembly holds sessions two or three times every six months. These sessions are open to the public. The County Council Assembly stipulates the goals and policies for the activities of the County Council and determines the budget and local County Council taxes.

The County Council Executive Committee directs the general everyday activities of the County Council. The Executive Committee consists of 17 councillors who meet once a month. The political composition of the County Council Assembly is reflected in the political composition of the Executive Committee.

There are three commissions in the County Council Assembly, one for democracy issues, one for quality matters, and one for priorities and ethics. The commissions are proactive in creating a dialogue with the citizens and also prepare objectives and assignments to the County Council Executive Committee.

There are four sub-committees, formed from the County Council Executive Committee and specialized in different fields. The operative responsibility is on the County Council Executive Committee where the sub-committee for preparation has a key role. Each sub-committee is run by a chairman. There is one sub-committee for preparation, one for personnel and negotiations, one for services, and one for procurement.

... and employees ensure that decisions are implemented

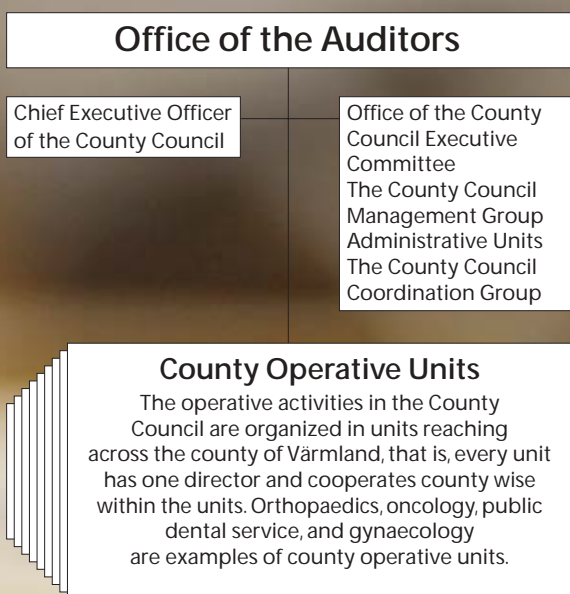
It is the politicians who determine what activities the County Council is going to carry out, and it is the non-political



employees who are responsible for the implementation. The most senior employee is the Chief Executive Officer of the County Council who is responsible to the County Council Executive Committee. The Staff of the Executive Office of the County Council Executive Committee assists the Chief Executive Officer in the preparation of such matters as policy proposals to the County Council Assembly and the County Council Executive Committee and they also deal with general matters concerning finance, personnel, information, and IT.

There are six supporting administrative units; economy, internal and external communications, IT, law- and procurement, personnel, and development. The county operative activities are organized in 27 units.

Organisation of County Council staff



Who does what in Värmland?

There is a long history of regional and local autonomy in Sweden. Every fourth year, the Swedish people elect those political parties and those politicians who they wish to direct the activities of the local authorities, the county councils, and the State.

The Local Authorities

There are 290 local authorities in Sweden and 16 of them are located in the county of Värmland. Local authorities are responsible for compulsory schools and upper secondary schools, child care and the care of the elderly, social welfare matters, public libraries, highways, parks, water supplies and sanitation, and so on. The councillors on the local authority council are responsible for these activities.

The County Councils

In Sweden, there are 18 County Councils, together with one local authority and two regions, which have as their main responsibility the provision of health and medical care, together with the public dental service, within their geographical area. It is the councillors in each County Council Assembly who are responsible for these activities. The county councils are also actively engaged in issues concerning regional development.

Region Värmland

The County Council has formed Region Värmland in conjunction with the 16 local authorities in the county. It is an organisation for growth, development, lobbying, and marketing. The aim is to create a competitive and attractive Värmland.

The State and County Administrative Boards

It is the government and the parliament that passes laws and determines taxation. Among the areas for which the State is responsible are included the police, defence, environmental protection, research and higher education. At the county level, the State is represented by the County Administrative Board and this is headed by the county governor.



Landstinget
i Värmland

Landstingshuset, S-651 82 Karlstad, Sweden
+46 54-61 50 00

www.liv.se e-mail: info@liv.se